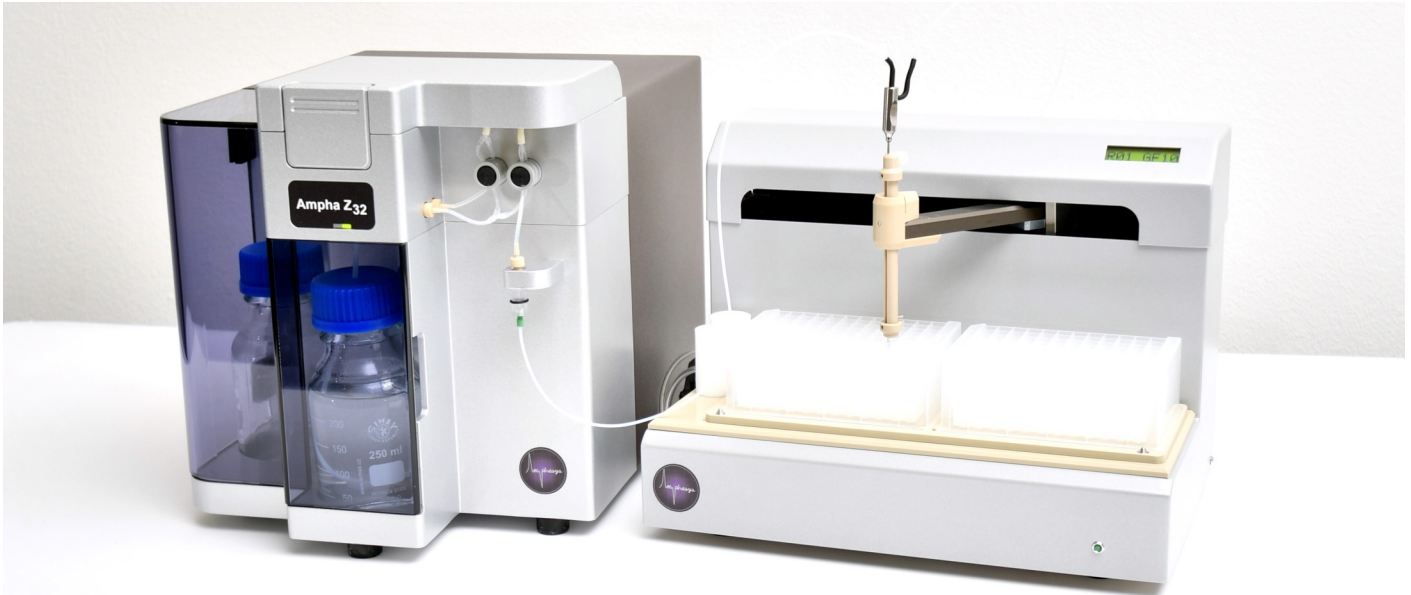


# The Universal Autosampler for Ampha Z32



## Automate Your Routine Analysis

Save time by automating sample loading for the Ampha Z32. With the Autosampler you can process up to 192 samples per run, giving you time back to focus on other important aspects of your project. The fully automated procedure includes sample loading, measuring and data recording.

## Consistent Results

The Autosampler was designed to comply with our customer's needs. A proprietary air resuspension feature enables a homogeneous distribution of particles for the measurement. This feature is crucial for an accurate analysis of quickly sedimenting cells, such as pollen.

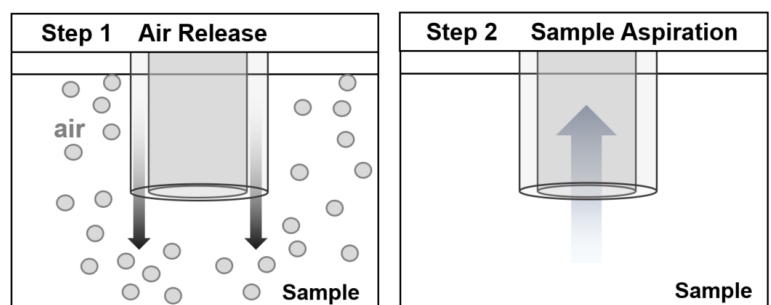


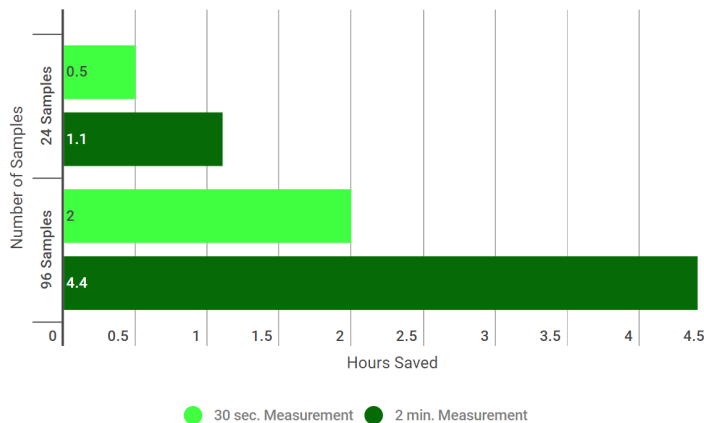
Figure 1: Illustration of air resuspension feature, mixing the sample with an air burst before aspiration.

## High Flexibility

- Process 1 - 192 samples
- Wash options include liquid flush or air bubble purge to minimize cross contamination
- Select your preferred type of 96 deep-well plate



## Save Hands-on Time



Save up to 4.4 hours of manual sample loading for 96 samples.

Figure 2: The examples compare a 30 second measurement with a 2 minute measurement, including loading time and air bubble purge for 24 and 96 samples.

## System Overview

Number of samples	1 - 192
Chip compatibility	AmphaChip 80 µm, 120 µm and 250 µm <i>Note: compatibility with other chips is in development</i>
Microtiter plate compatibility	Standard (ANSI) 2 ml 96-deepwell plates. Max height: 44 mm <i>Note: U-shaped wells are recommended over V-shaped wells</i>
Maximum fill height	1.8 ml
Compatible liquids	All Amphasys measurement buffers AmphaClean for cleaning protocol <i>Note: To prevent foam formation, addition of detergents is not recommended</i>
Resuspension time	0 - 60 seconds, default = 10 seconds
Resuspension	Proprietary air flow feature, allowing to optimize resuspension time based on particle size
Carry over	< 0.2 % with air bubble purge
Wash option	Option to flush tubing between samples
Regulatory compliance	CE (2006/95/EC and 2004/108/EC)
Power requirements	24 V DC (external power adapter 110 - 230 V AC)
Dimensions (W x H x D)	310 x 215 x 200 mm
Weight	4 kg

## Contact

Amphasys AG | Technopark Lucerne | CH-6039 Root D4 Switzerland

☎ +41 41 541 91 20 | ✉ info@amphasys.com | 💻 www.amphasys.com